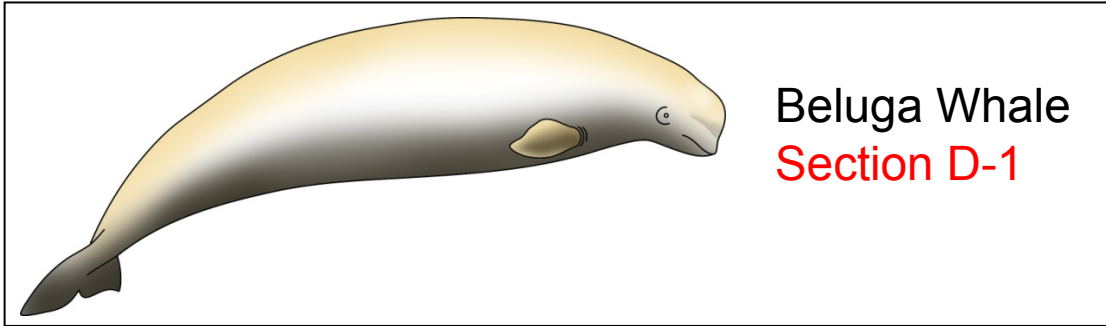


## Section D



## Section D

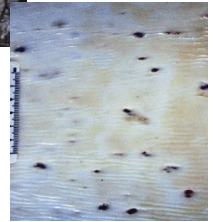
### Diseases and Parasites of the Beluga



#### Skin infections



Photo Credits: D. Martineau



Beluga whale

Section D-1.1

#### Skin craters

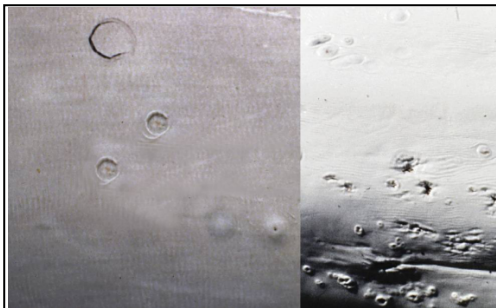


Photo Credit: J. Geraci

Beluga whale

Section D-1.2

#### Whale lice



Photo Credits: L. Measures



Beluga Whale

Section D-1.3

# Section D

## Diseases and Parasites of the Beluga

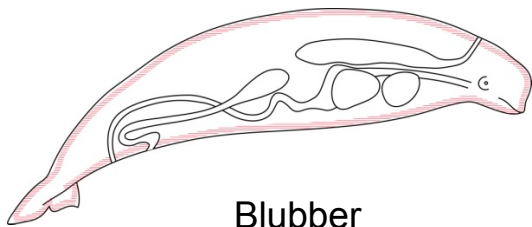
### Blubber cysts

Photo Credit: Dr. J. Geraci



Beluga whale

Section D-1.4



Blubber

### Worms between blubber and meat

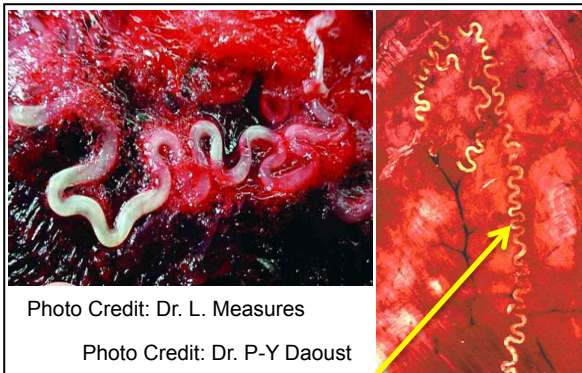


Photo Credit: Dr. L. Measures

Photo Credit: Dr. P-Y Daoust

Beluga whale

Section D-1.5

**Section D**

**Diseases and Parasites of the Beluga**

**Kidney worms**

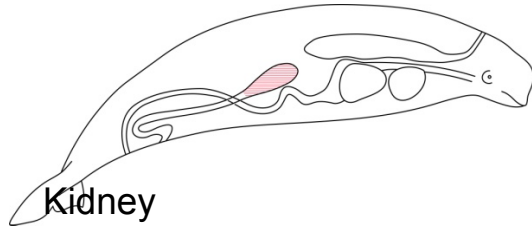


Photo Credit: Dr. P. Duignan



Beluga whale

**Section D-1.6**

**Worms in the blowhole**

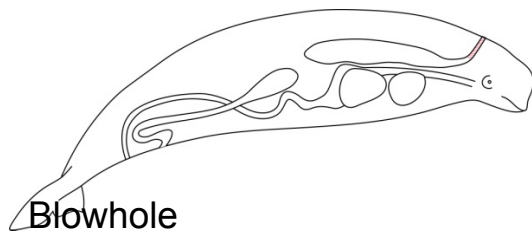


Photo Credit: G. Early

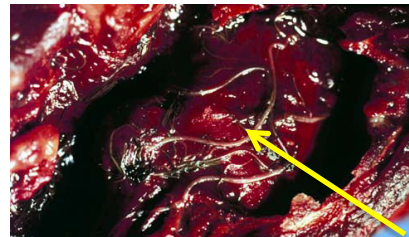


Photo Credit: J. Geraci

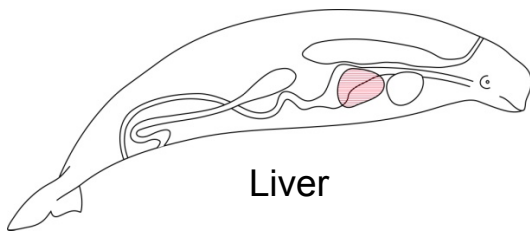
Beluga whale

**Section D-1.7**

## Section D

### Diseases and Parasites of the Beluga

#### Liver Fluke



Liver

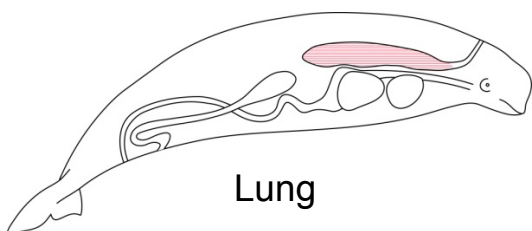


Photo Credit: Dr. L. Measures

Beluga whale

Section D-1.8

#### Lungworms



Lung

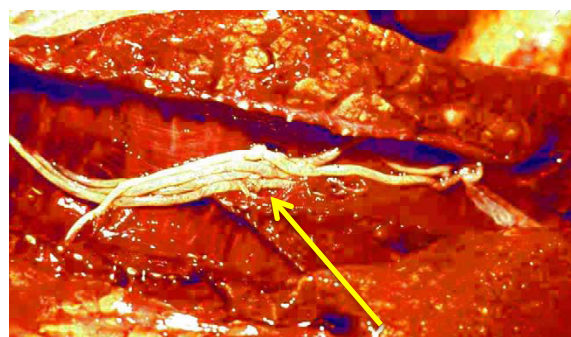


Photo Credit: Dr. J. Geraci

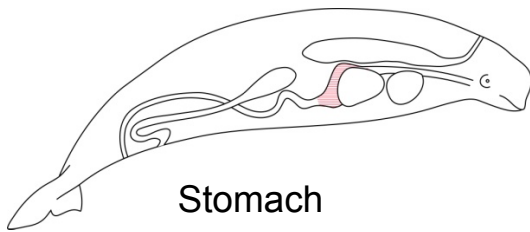
Beluga whale

Section D-1.9



## **Section D**

### Diseases and Parasites of the Beluga



#### **Stomach worms**

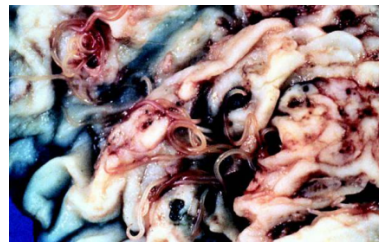


Photo Credit:  
*Dr. D. Martineau*

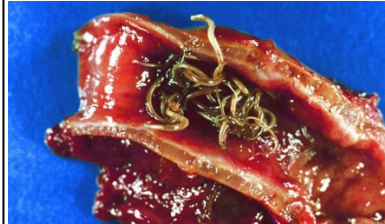


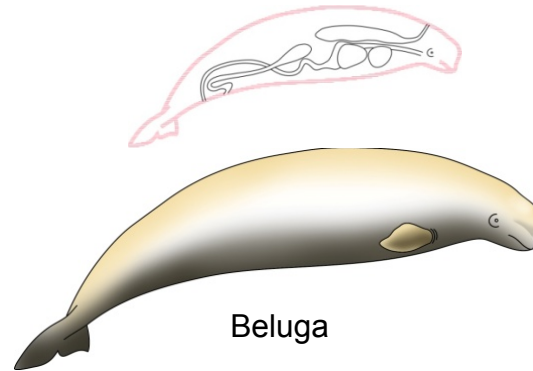
Photo Credit:  
*Dr. J. Geraci*

Beluga whale

**Section D-1.10**

## D-1.1

# Skin Infections



## Beluga Whale

### 1. Where is it found ?

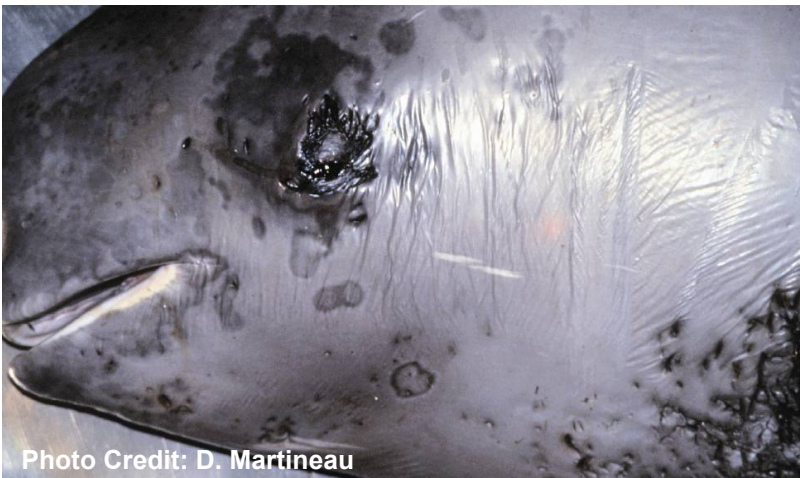


Photo Credit: D. Martineau

- Sores can be found anywhere on the body.
- Skin may be dry and peeling. Large patches may be discoloured.

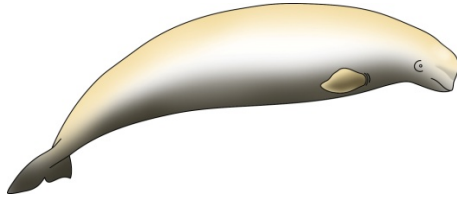
- The exact cause is unknown.
- Found only in St. Lawrence River population, not yet seen in Nunavut.

### 2. What is it ?

- Skin infections cause severe skin disease.
- Sores can vary in size, colour, shape and location. They can rupture and be slow to heal.



Photo Credit: D. Martineau



## Skin Infections

3. **Is it safe to butcher the beluga ?**



Wear gloves or plastic bags over hands.

4. **Is it safe to eat the beluga ?**



It is not recommended that the muktuk of affected areas be eaten.

It is not recommended to eat any parts of the beluga if more than one third of the whale has this condition.

5. **Is it safe to feed to dogs ?**



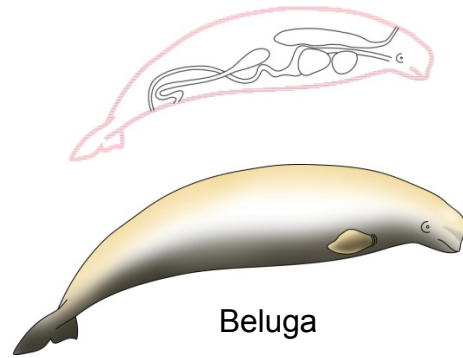
It is not recommended to feed dogs anything not safe for people to eat.

For more information go to [H-D.1](#)



## D-1.2

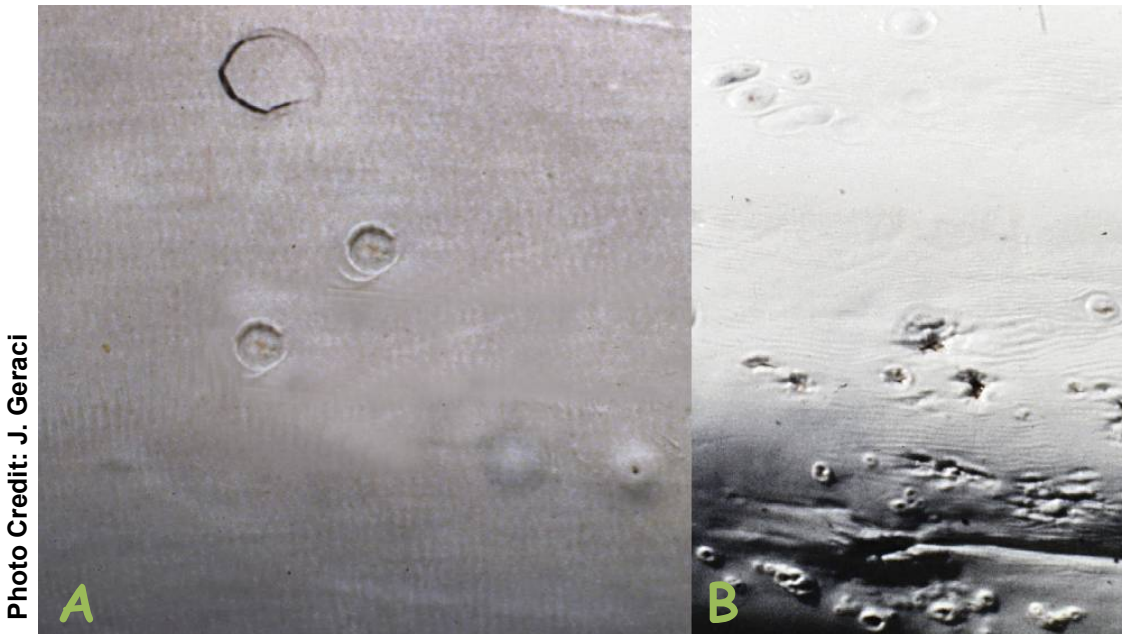
### Skin “Craters”



## Beluga Whale

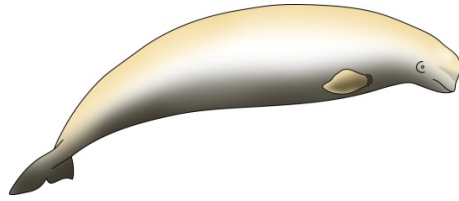
#### 1. Where are they found ?

- Skin craters can be found anywhere on the body.



#### 2. What are they ?

- Skin craters are circular depressions on the skin, often with a thin raised edge around the circle.
- Skin craters are variable in size and shape as seen in photos A and B.
- Their cause is unknown, but appearance suggests that they may be caused by a virus.



## Skin “Craters”

3. Is it safe to butcher the beluga ?

SAFE

4. Is it safe to eat the beluga ?

CAUTION

It is not recommended to eat skin and underlying blubber from areas with skin craters.

5. Is it safe to feed to dogs ?

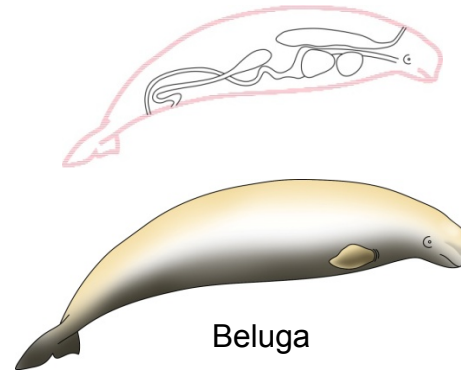
It is not recommended to feed skin or underlying blubber to dogs from areas with skin craters.



For more information go to [H-D.2](#)

## D-1.3

# Whale “Lice”



Beluga Whale

## 1. Where are they found ?

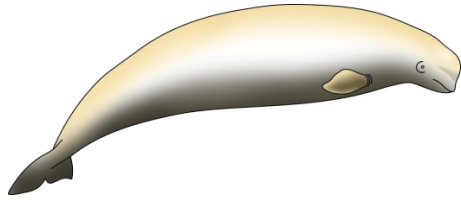
Photo Credit: L. Measures



- Whale “lice” live in cracks and on barnacles and bumps on the skin of whales.
- Whale “lice” do not cause disease, but large numbers may indicate an unhealthy whale.

## 2. What are they ?

- Whale “lice” are not really lice, but are small water-living animals.



## Whale “Lice”

3. Is it safe to butcher the beluga ?

SAFE

4. Is it safe to eat the beluga ?

SAFE

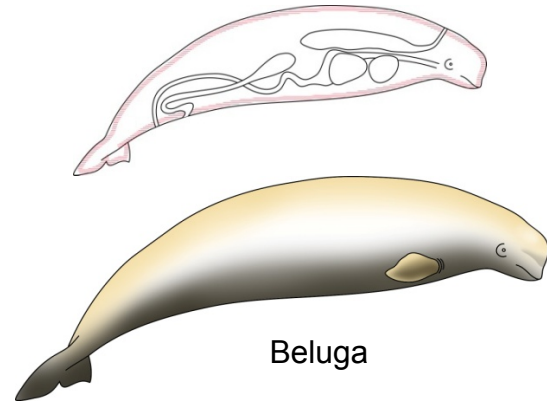
5. Is it safe to feed to dogs ?



For more information go to [H-D.3](#)

## D-1.4

# Parasitic Cysts in Blubber



## 1. Where are they found ?

- Sacs, or cysts, can occur anywhere in blubber but are most often found on the underside of the animal.

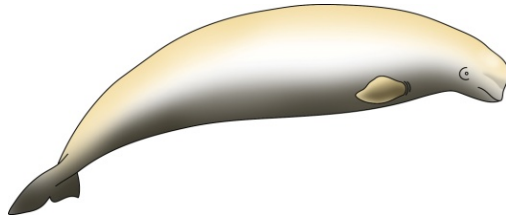
Photo Credit: Dr. J. Geraci



## 2. What are they ?

- The fluid-filled cysts contain an immature tapeworm.
- The tapeworms will mature only in a different animal which is likely a shark.





## Parasitic Cysts in Blubber

3. Is it safe to butcher the beluga ?

SAFE

4. Is it safe to eat the beluga ?

CAUTION

It is recommended to cut away cysts before eating.

5. Is it safe to feed to dogs ?

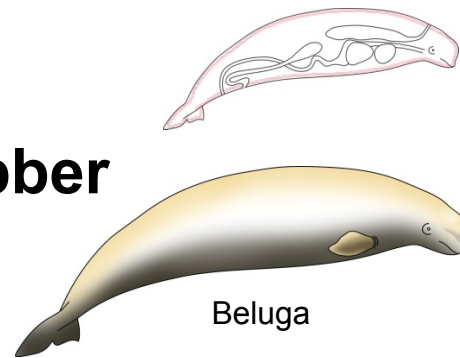


It is recommended to cut away cysts before feeding to dogs.

For more information go to [H-D.4](#)

## D-1.5

# Worms between Blubber and Meat



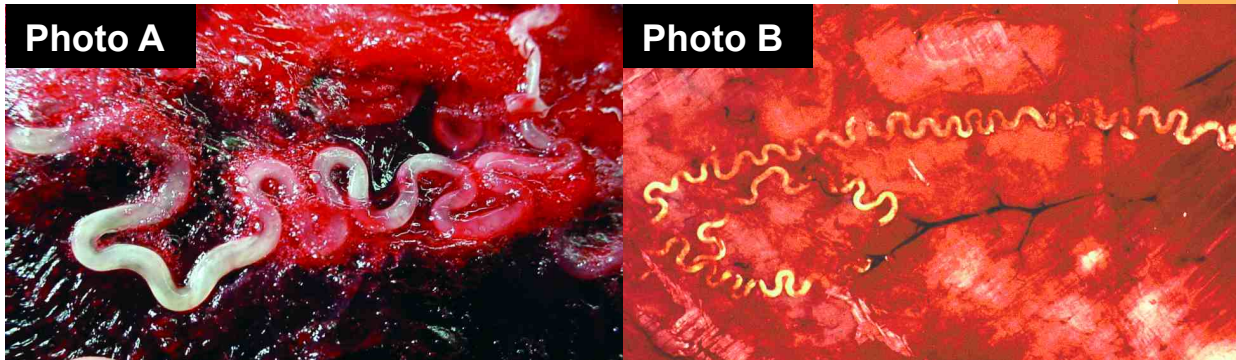
## Beluga Whale

### 1. Where are they found ?

- Worms generally occur in the tissue where the blubber and meat connect such as seen in Photo A.

Photo Credit: Dr. L. Measures

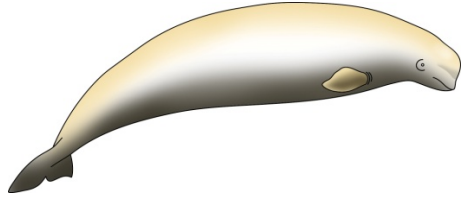
Photo Credit: Dr. P-Y Daoust



- Worms can also occur in other locations.
- Sometimes the worms can still be seen after they have died and become hardened as shown in Photo B.

### 2. What are they ?

- They are parasitic worms called roundworms.



## **Worms between Blubber and Meat**

**3. Is it safe to butcher the beluga ?**

**SAFE**

**4. Is it safe to eat the beluga ?**

**SAFE**

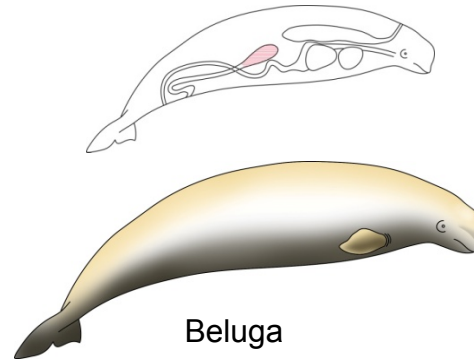
**5. Is it safe to feed to dogs ?**



For more information go to **H-D.5**

## D-1.6

# Worms in the Kidney



Beluga Whale

## 1. Where are they found ?

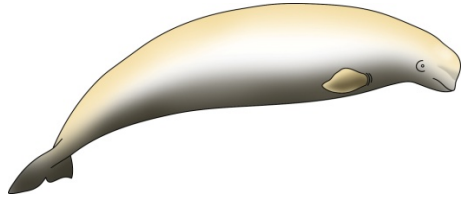
- Worms are found in large numbers inside the kidney.

Photo Credit: Dr. P. Duignan



## 2. What are they ?

- These are large parasitic roundworms.



## Worms in the Kidney

3. **Is it safe to butcher the beluga ?**



4. **Is it safe to eat the beluga ?**



It is recommended to either cut out and throw away any kidneys with worms, or cook any kidneys having worms before eating.

5. **Is it safe to feed to dogs ?**



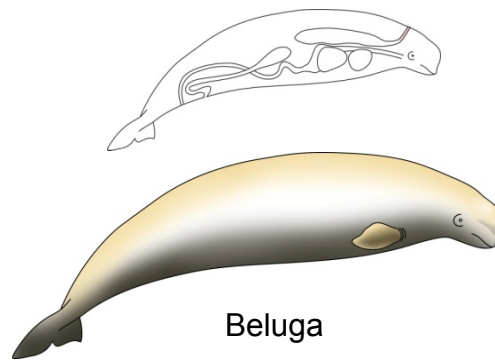
It is recommended to cook kidneys first before feeding to dogs.

For more information go to [H-D.6](#)



## D-1.7

# Worms in Blowhole and Head



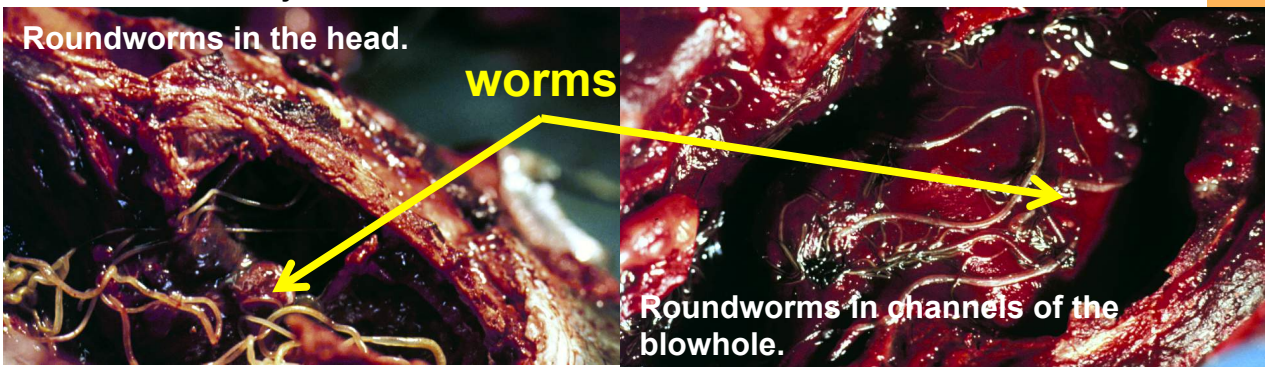
## Beluga Whale

### 1. Where are they found ?

- These worms can be found anywhere in the head, including the ear and channels connected to the blowhole.

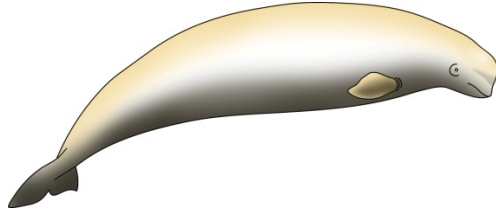
Photo Credit: G. Early

Photo Credit: J. Geraci



### 2. What are they ?

- Parasitic roundworms and or flukes.



## **Worms in Blowhole and Head**

**3. Is it safe to butcher the beluga ?**

**SAFE**

**4. Is it safe to eat the beluga ?**

**SAFE**

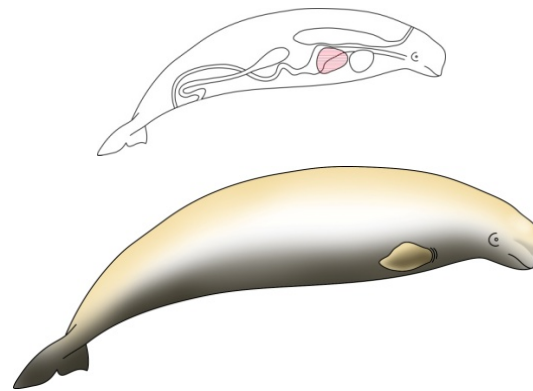
**5. Is it safe to feed to dogs ?**



For more information go to **H-D.7**

**D-1.8**

## Liver Fluke



Beluga

**Beluga Whale**

### 1. Where are they found ?

- Flukes are often found in the tubes of the liver and pancreas.



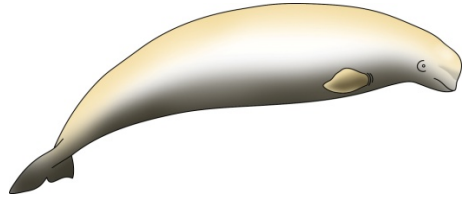
Photo Credit: Dr. L Measures

- Flukes in these tissues can often cause sores that can spread to neighboring tissues.

### 2. What are they ?

- Flukes are small, flat, worm-like parasites.

# Beluga Whale



## Liver Fluke

3. Is it safe to skin the whale ?

SAFE

4. Is it safe to eat the whale ?

SAFE

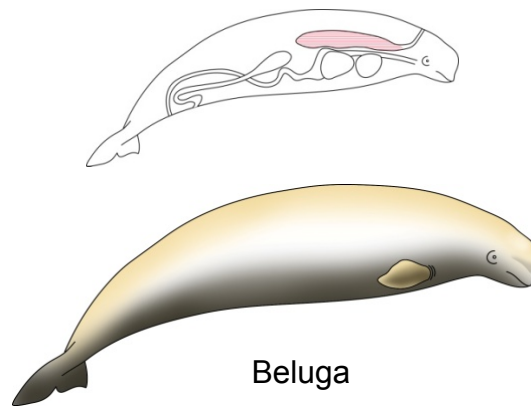
5. Is it safe to feed to dogs ?



For more information go to [H-D.8](#)

## D-1.9

# Lungworms



## Beluga Whale

### 1. Where are they found ?

- Lungworms are found in the lungs of Belugas.
- Different species of lungworms are found in seals.

### 2. What are they ?

- Lungworms are parasitic roundworms.
- Worms (< 7 cm) and/or small round grey lumps of dead tissue (<2 cm) may be found when butchering.

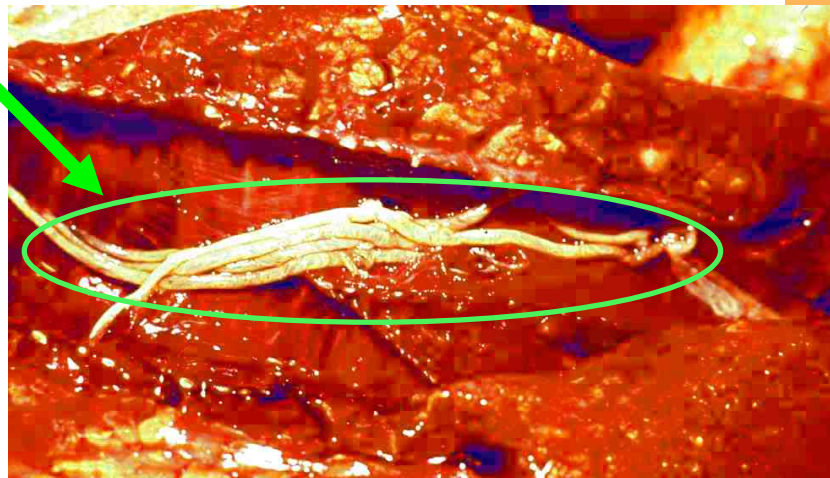
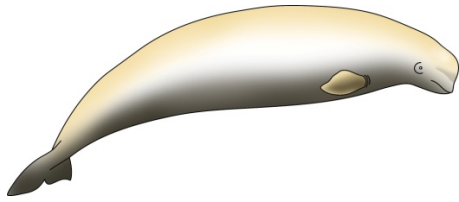


Photo Credit: Dr. J. Geraci



# Beluga Whale



## Lungworms

3. Is it safe to skin the whale ?

SAFE

4. Is it safe to eat the whale ?

SAFE

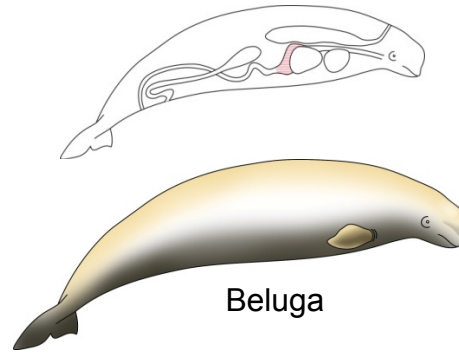
5. Is it safe to feed to dogs ?



For more information go to [H-D.9](#)

**D-1.10**

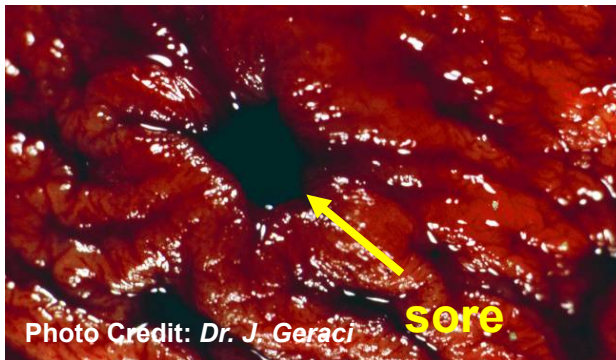
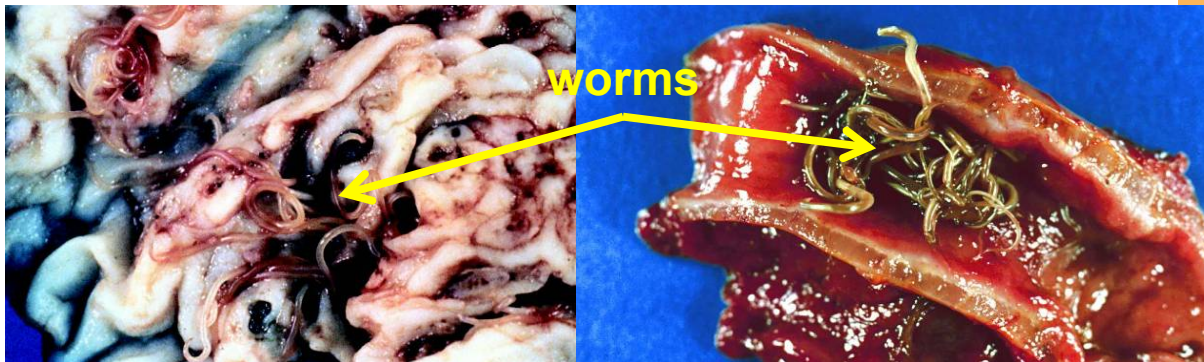
## Stomach Worms



**Beluga Whale**

### 1. Where are they found ?

Photo Credit: *Dr. D. Martineau*

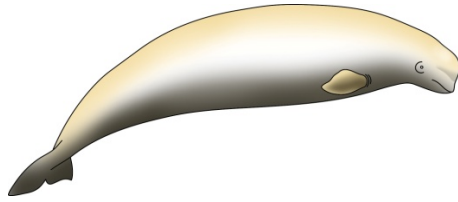


- Stomach worms can be found anywhere in the stomach and also in the intestines.

- Worms can burrow into tissues causing sores.

### 2. What are they ?

- Stomach worms are parasitic roundworms.
- Beluga are infected by eating infected fish. The fish become infected from eating infected invertebrates such as krill.



## Stomach Worms

3. Is it safe to skin the whale ?

SAFE

4. Is it safe to eat the whale ?

It is not recommended to eat infected stomach or intestines raw.

5. Is it safe to feed to dogs ?

It is not recommended to feed dogs infected stomach or intestines raw.

For more information go to [H-D.10](#)